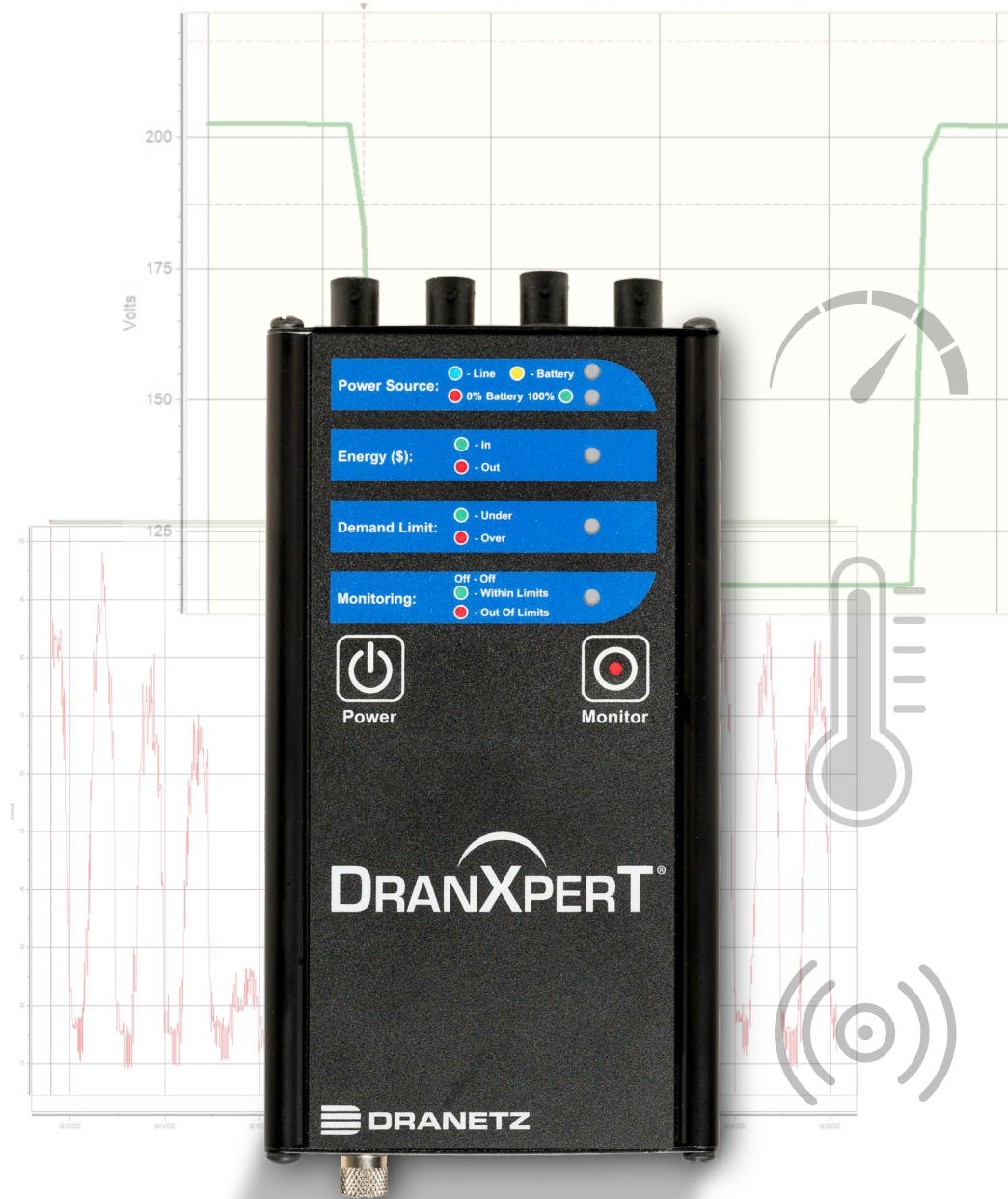


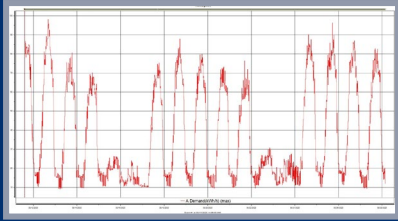
ENERGY, POWER, AND SENSOR DATA LOGGER

TRUSTWORTHY
POWER LOGGING

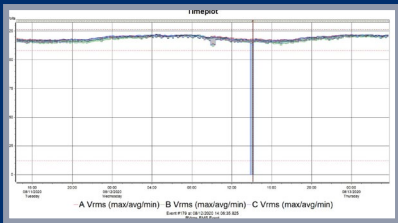


DRANXPRT[®]

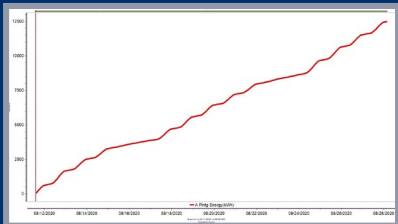
DRAN-VIEW SOFTWARE



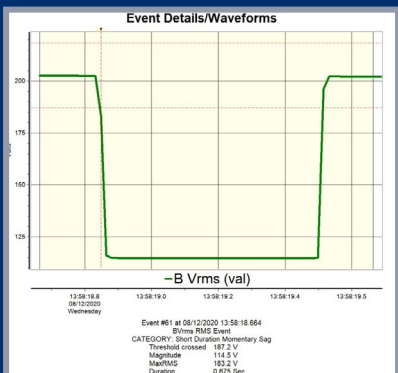
Load Trends



Voltage Trends



Energy Trends



View PQ Events

DRANXPERT®

LOW COST PORTABLE ENERGY/POWER LOGGER & PQ DETECTOR

- Power/energy logger & PQ disturbance/event detector
- 3 voltage channels – Direct measurements up to 600Vrms, CATIII
- 4 current channels – Compatible with Dranetz Rogowski, hinged and 0.333mv CT's from other sources (UL listed)
- 4 Analog, 2 Digital, 1 Extended Serial Bus, 1 vibration & GPS. Requires option sensor module
- Measures: V, I, W (P), VA (S), VAR (Q), PF, Demand, Energy & much more
- PQ disturbance detector – Detect and records trends of RMS sags/dips, swells, current changes – **IEC 61000-4-30 1/2 cycle methods**
- Harmonic measurements & recording – Vthd, Ithd. Measurements using the methods of IEEE 519-2014/IEC 61000-4-7
- Web browser interface for real time meters, setup and data transfer
- Free, unlicensed Dran-View software for analysis & reporting
- **7 hr. battery runtime – Best in class**
- **Automatic wiring verification – LED's indicate wiring errors**
- Ethernet, USB communications
- Modbus, BACnet
- UL and CE Compliant
- 3 Year Warranty

COLOR CONNECTION LED'S

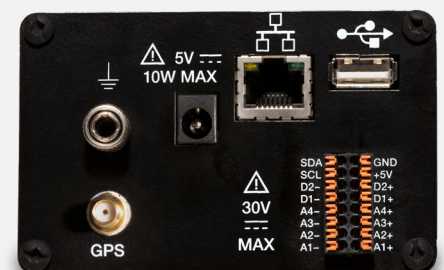
Easily identify wiring errors
Color coded to your wiring
Correct for wiring errors



4 CURRENT CHANNELS

SENSOR INPUTS (Optional)

- 4 Analog
- 3 Digital
- 1 Extended Serial Bus (ESB)
- 1 Vibration (internal)

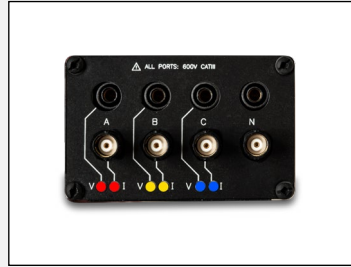




INCLUDES CT'S AND ACCESSORIES



SMALL AND COMPACT



3 VOLTAGE, 4 CURRENT CHANNELS



ETHERNET, USB, & OPTIONAL SENSOR INPUTS

APPLICATIONS

DRANXPERT IS USER FRIENDLY IN VIRTUALLY ANY LOCAL OR REMOTE POWER MONITORING APPLICATION, INCLUDING:

- **Energy audits**
- Demand side management
- Basic PQ surveys
- **NEC 220.87 load monitoring**
- Check metering
- Sub metering
- Tenant metering
- Alternative energy production & DER integration
- Energy cost allocation
- Load profiling
- Power factor studies
- Residential applications including energy using and PQ detection
- Automatic (or manual) internet updates

INDUSTRIES INCLUDE, BUT ARE NOT LIMITED TO:

- Utility
- Commercial
- Industrial
- Manufacturing
- Electrical contractors
- Property management & real estate
- Petrochemical & Chemical
- Hospital & healthcare
- Oil exploration

SENSOR INPUT APPLICATIONS (OPTIONALLY AVAILABLE) – IN PARALLEL WITH POWER MONITORING:

- Environmental monitoring – temperature, humidity, light & more
- Utility/energy pulse counting – electricity, gas, steam, water & more
- Alarm monitoring – breaker/protection, switching, out of specifications, contacts, security & more
- Accelerometer – vibration, motors, rotating machines, process, seismological & more
- GPS location

TECHNICAL DATA

GENERAL

- Sampling Frequency: 32ksps (recorded and real-time meters), 128 samples per cycle (periodic waveform snapshots)
- Sag/dip, swell trigger resolution: 1 cycle (uses IEC 61000-4-30 Class S methods)
- Panel indicators: RGB LEDs for monitoring on/off, energy flow, PQ event indication, battery charging/status, wiring status
- Storage Capacity: 8GB
- UL, CE

VOLTAGE (3)

- Range: 90 to 600Vrms CATIII
- Accuracy: 90 Vrms to 600Vrms = $\pm 0.1\%$, < 90 Vrms = 0.5%
- Connections: 4 safety banana voltage inputs – 3 phase voltage and 1 neutral/reference

CURRENT (4)

- Input: 0.333 VRMS full scale, Connections: BNC
- Accuracy: $\pm 0.1\%$ + probe

FREQUENCY

- Range: 50Hz = 45Hz to 55Hz, 60Hz = 55Hz to 65Hz
- Accuracy: 50/60Hz: ± 0.001 Hz

POWER QUALITY

- Sag/dip, swell trigger threshold resolution: 1 cycle
- Vthd: $\pm 5\%$ for $V \geq 10\%$ Vnom
- Ithd: $\pm 5\%$ for $I \geq 10\%$ Inom + probe error

ENERGY PARAMETERS (Probe Dependent)

- (True/Active) Energy (P): 0.1%
- Reactive Energy (Q): 0.1%
- Apparent Energy (S): 0.1%
- Fundamental Active Energy(P): 0.2%
- Fundamental Reactive Energy(Q): 0.2%
- Fundamental Apparent Energy (S): 0.2%
- Demand: 0.2%

POWER PARAMETERS (Probe Dependent)

- (True/Active) Power (P): 0.2%
- Reactive Power (Q): 0.2%
- Apparent Power (S): 0.2%
- Fundamental Active Power(P): 0.2%
- Fundamental Reactive Power (Q): 0.2%
- Fundamental Apparent Power (S): 0.2%
- Power Factor (PF): $\pm 0.001\%$

SENSOR INPUTS

- Analog (4 isolated): 0-10Vdc/4-20ma, 1KHz sampling, 0.6%, 30Vdc max
- Digital (2): 5Vdc/12Vdc/24Vdc, 1KHz sampling, 30Vdc max
- Accelerometer (1): 250Hz max sample rate
- GPS (1): Location logging, 60-90 sec update rate
- ESB (1): 4-wire, 100Khz baud rate, 10ft cable max

INSTRUMENT POWER

LINE POWER SUPPLY

- Range: 90 to 264 VAC, 47 to 63Hz, Consumption: 15W max
- Line cords/plugs: Localized – US, EU, UK, Australia available

INTERNAL BATTERY

- Rechargeable lithium Ion battery pack (UL recognized)
- Run time: 7 hours (typical), Charge time: 15 hours (typical)

COMMUNICATION INTERFACES

- Ethernet: 10Mbps
- USB: 2.0
- Protocols: Modbus, Bacnet

ENCLOSURE & MECHANICAL

MECHANICAL

- Weight: 1.4 lb. (0.64Kg)
- Dimensions: 3.5" W x 2.2" H x 7.4" L (6.4 cm x 8.9 cm x 18.8cm)
- IP50 (vertical position)

ENVIRONMENTAL

- Storage Temperature: 5 to 131 °F (-15 to +55 °C)
- Operating Temperature: 32 to 113 °F (0 to +45 °C)
- Humidity: 5% to 95% non-condensing

ORDERING INFORMATION

DRANXPRT PACKAGE ORDERING INFORMATION

Popular Rogowski Packages

DXPT-F500-16PKG-xx: 500A 16" Flex CT package
DXPT-F1500-16PKG-xx: 1500A 16" Flex CT package
DXPT-F3000-16PKG-xx: 3000A 16" Flex CT package
Also available with 24" & 36" lengths

Popular Rogowski Packages With Sensor Inputs

DXPT-S-F500-16PKG-xx: 500A 16" Flex CT package
DXPT-S-F1500-16PKG-xx: 1500A 16" Flex CT package
DXPT-S-F3000-16PKG-xx: 3000A 16" Flex CT package
Also available with 24" & 36" lengths

xx: Enter line cord code - US, EU, UK, AU (Australia)

Each package includes: DranXperT, (3) CT's, voltage cables/clips, carry case, Dran-View software (download), line cord

AVAILABLE CT'S

Rogowski

FLEX-500A-16: 50-500A, 1%, 16"
FLEX-1500A-16: 150-1500, 1%, 16"
FLEX-3000A-16: 300-3000A, 1%, 16"
Also available in 24" and 36" lengths

Hinged

CT-H-5A: 5A, 0.5%, 0.4" window
CT-H-20A: 20A, 0.5%, 0.4" window
CT-H-50A: 50A, 0.5%, 0.4" window
CT-H-100A: 100A, 0.5%, 1.0" window
CT-H-600A: 600A, 0.5%, 1.38" window



dranetz.com

1.800.372.6832 sales@dranetz.com

tel 732.287.3680 • fax 732.248.1834 • 191 Talmadge Road • Edison, New Jersey 08817 USA

DranXperT and Dran-View are trademarks of Dranetz. ©2024 Dranetz. All rights reserved.
Printed in the United States. Specifications are subject to change without notice.

All trademarks, registered trademarks, logos, product names, and company names are the property of their respective owners.



U10-Rev A